



REQUEST FOR PROPOSALS

**Morristown Trail Inventory, Assessment, and
Connectivity Planning Project**

Issued by: Town of Morristown

Release Date: [Friday, June 12, 2026](#)



IMPORTANT INFO

ALL RESPONSES ARE DUE ON OR BEFORE:

DATE: **Monday, July 13, 2026**

TIME: **4:00 PM**

SUBMIT THE FOLLOWING:

(1) electronic copy in PDF format.

TO ADDRESS:

Adele Taplin, Economic & Community Development Director

Town of Morristown

ataplin@morristownvt.gov

43 Portland Street | Morrisville, VT 05661

(802) 888-6375

QUESTIONS & ADDENDUMS:

All questions must be submitted no later than 14 days prior to the proposal due date. Responses will be shared with all interested bidders.

I. PROJECT OVERVIEW

The Town of Morristown is seeking proposals from qualified trail planning and recreation professionals to complete a Trail Inventory, Assessment, and Connectivity Project.

Funded through the Vermont Recreational Trails Program (RTP), this project will document and assess Morristown's locally managed trail network, identify connectivity opportunities, and establish priorities for future trail improvements. The project will focus on town, school, forest, conserved, subdivision, and other publicly accessible local trails. The project is anticipated to include inventory and assessment of approximately 20 miles or more of locally managed natural-surface trails.

Statewide trail systems, including the Lamoille Valley Rail Trail (LVRT), Long Trail, Catamount Trail, and VAST trails, will not be assessed as part of this project but will be considered in the connectivity analysis due to their importance to regional recreation. Particular emphasis should be placed on connections to the LVRT, for which Morristown serves as a major access hub.

The project will be guided by the Town of Morristown in collaboration with the Morristown Conservation Commission (MCC) and, if established prior to project initiation, the Town's Trails Committee. References to MCC throughout this RFP should be understood to include the Trails Committee, if formed, or other designated volunteer representatives identified by the Town.

The Town may coordinate with Lamoille County Planning Commission (LCPC) regarding existing GIS resources and future public-facing trail mapping. The Town may request the consultant participate in coordination meetings or information sharing with LCPC as needed.

The Town and Morristown Conservation Commission have completed a preliminary inventory of known trails and recreation corridors, which will be provided to the selected consultant as background information. The Town anticipates utilizing MCC members, Trails Committee members (if established), and community volunteers to assist with trail inventory field work. Respondents should describe how volunteer participation will be incorporated into the project approach and quality-control process.

II. PROJECT GOALS

The goals of the project are to:

1. Inventory and assess Morristown's locally managed trails.
2. Document trail conditions, uses, difficulty, access, ownership, and existing infrastructure.
3. Identify trail ownership, maintenance responsibilities, and access considerations where known.
4. Evaluate connectivity between existing trails, community destinations, and regional trail systems.

5. Identify gaps, barriers, and opportunities for improved trail connections.
6. Gather community input regarding trail use and future priorities.
7. Develop recommendations to guide future trail improvements and connectivity projects.

III. SCOPE OF WORK

Task 1 – Project Coordination & Scoping

- Kickoff meeting
- Review existing inventory, GIS, and trail information
- Refine data collection methods
- Coordinate with Town, MCC, and any future Trails Committee

Task 2 – Volunteer Training & Data Collection Framework

- Develop inventory forms and protocols
- Train MCC volunteers and other community volunteers
- Establish quality-control procedures
- Provide Trail Inventory Data Collection Forms and Guidance Materials

Task 3 – Comprehensive Trail Inventory & Assessment

- Assess locally managed trails
- Inventory trailheads, signage, parking, bridges, kiosks, and crossings
- Document trail condition, difficulty, use, character, ownership, access, and accessibility considerations
- Identify maintenance needs, management considerations, and potential improvement priorities
- Compile results into a database

Task 4 – Connectivity & Gap Analysis

- Evaluate opportunities to connect local trail systems
- Analyze connections to community destinations and the LVRT
- Identify ownership, permission, and permitting considerations

Task 5 – Community & Stakeholder Engagement

- Community survey
- Up to two public engagement sessions or meetings
- Stakeholder outreach and engagement

Task 6 – Draft & Final Plan

- Draft report
- Prioritization framework and recommended next steps
- Recommendations for future mapping, stewardship, and trail improvements
- Final report and presentation

IV. DELIVERABLES

The selected consultant shall provide:

1. Project Work Plan and Schedule
2. Trail Inventory Data Collection Forms and Guidance Materials
3. Volunteer Training Materials
4. Trail Inventory and Assessment Database and Supporting Documentation
5. Ownership and Access Summary
6. Connectivity and Gap Analysis Summary
7. Community Engagement Summary
8. Trail Prioritization Framework and Recommended Next Steps
9. Draft Trail Inventory, Assessment, and Connectivity Plan
10. Final Trail Inventory, Assessment, and Connectivity Plan
11. Digital Copies of All Supporting Data and Final Deliverables

All deliverables shall become the property of the Town of Morristown.

V. PROJECT SCHEDULE

RFP Issued: Friday, June 12, 2026

Questions Due: Friday, June 26, 2026

Proposals Due: Monday, July 13, 2026 at 4:00 PM

Anticipated Contract Award: On or after July 20, 2026

Project Kick-Off: Late Summer 2026

Draft Report: Summer 2027

Final Report: December 2027

VI. PROPOSAL REQUIREMENTS

Proposals shall include the following:

Cover Letter

A brief letter introducing the firm, expressing interest in the project, and identifying the primary project contact.

Project Understanding

Demonstrate understanding of the project goals, scope, and desired outcomes.

Proposed Approach and Methodology

Describe the firm's proposed approach to:

- Volunteer training and data collection support
- Trail inventory and assessment
- Connectivity and gap analysis
- Community engagement
- Development of recommendations and final report

Project Team

Identify key personnel assigned to the project and summarize their qualifications and relevant experience.

Relevant Experience

Provide examples of similar trail inventory, trail assessment, recreation planning, or connectivity studies completed by the firm.

References

Provide a minimum of three references for projects of similar scope and complexity.

Project Schedule

Provide a proposed schedule identifying key milestones and anticipated completion dates.

Cost Proposal

Provide a detailed cost proposal including:

- Personnel and labor costs
- Direct expenses
- Subcontractor costs, if applicable
- Total project cost

Respondents shall provide costs by task and identify any assumptions regarding volunteer participation.

Insurance

Provide proof of insurance coverage or a statement indicating the firm's ability to obtain required coverage.

VII. EVALUATION CRITERIA

Proposals will be evaluated based on:

1. Understanding of the project and project goals.
2. Quality of the proposed approach and methodology.
3. Experience with trail inventory, assessment, connectivity planning, and community engagement.
4. Qualifications of the proposed project team.
5. Cost and overall value.

The Town reserves the right to interview selected firms prior to final selection. The Town may negotiate the final scope, schedule, budget, and deliverables with the selected consultant.

VIII. CONTRACT REQUIREMENTS

The selected consultant shall enter into a written agreement with the Town of Morristown. The selected consultant shall:

- Comply with all applicable federal, state, and local laws and regulations.
- Comply with all applicable Vermont Recreational Trails Program (RTP) requirements.
- Maintain required insurance coverage throughout the duration of the project.
- Indemnify and hold harmless the Town of Morristown to the extent permitted by law.
- Provide all deliverables in accordance with the executed agreement.

IX. GENERAL CONDITIONS

The Town of Morristown reserves the right to:

- Reject any or all proposals.
- Waive informalities or minor irregularities in proposals.
- Request additional information from respondents.
- Interview selected firms.
- Negotiate the final scope, schedule, budget, and contract terms with the selected consultant.
- Cancel or modify this solicitation at any time.

All costs associated with proposal preparation, interviews, and participation in the selection process shall be the sole responsibility of the respondent.

All proposals submitted become the property of the Town of Morristown and may be subject to public disclosure under Vermont law.

Any information the respondent considers proprietary or exempt from public disclosure must be clearly identified at the time of submission.



APPENDIX A

Preliminary Trail Inventory and Existing Conditions Assessment

Prepared by:

Morristown Conservation Commission

Provided as supporting information for the

Morristown Trail Inventory, Assessment, and Connectivity Planning Project

June 12, 2026

Inventory of Human Powered Recreational Trails

- Trails Open to the Public
- Existing Trails on Private Property
- Possibilities for Future Trails

Morristown, Vermont

Hilary Warner

6/2/2026

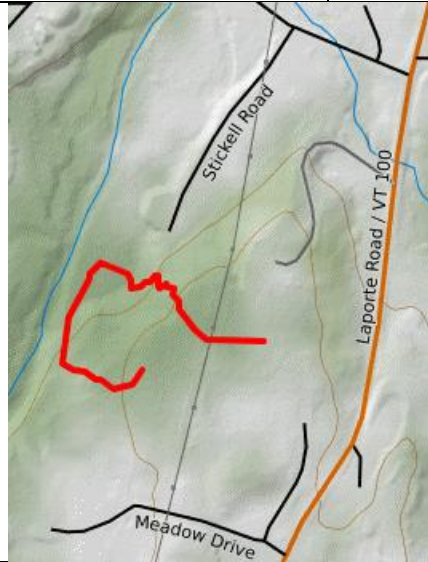
Table of Contents

Trails Open to The Public	3
Anderson Lane (A).....	4
Beaver Meadow Trail, Beaver Meadow Cut off Trail, Whiteface Trail, and Chilcoot Pass Trail (B).....	5
Cadys Falls Trails (C)	6
Catamount Trail (D).....	7
Copley Demars Trails (E)	8
Maple St to East Cherry Ave, woods parallel to Country Club (F)	9
Joe's Pond (G).....	10
Kenfield Brook (H).....	11
Kyrrland (I).....	12
Lake Lamoille Trail (J)	13
Lamoille County Nature Center (K)	14
Lamoille Valley Rail Trail (L)	15
Morristown Schools Trails (M)	16
Morristown Town Forest (N)	17
Muddy Moose (P).....	18
Pleasant View Cemetery (Q)	19
Story Stroll at Lamoille Family Center (SS).....	20
VAST (R).....	21
Valcour Bog- links Joe's Pond and Morrystown Bog Natural Area (S)	22
Existing Trails on Private Property	23
Bliss Hill Trails (T)	24
Bridge St to All Saint's along Ryder Brook to Demars Properties land (U)	25
Rapids, Ledges, and 15B- Mud City/ Beaver Meadow area (V)	26
Rail Trail Lane to LVRT connector (W).....	27
Park St to LVRT connector (X)	28
Tom G's-Mud City Loop to Walton Road (Y)	29
Possibilities for Future Trails.....	30
Bugbee Springs (Z)	31
Bull Moose Road (class 4 road) to private property (AA)	32

Clark Park (BB).....	33
Copley Country Club (CC).....	34
Copley Country Club to Elmore St connector (DD)	35
Copley and Lamoille Health Partners area (EE)	36
Duhamel Rd through old Cady's Falls Nursery to Kenfield Brook (FF).....	38
Main St to Bridge St at MoBev (GG)	39
Rooney Farm (HH).....	40
Schools to LVRT via Morrisville Water and Light- proposed trail (JJ).....	41
Velomont Trail.....	42
Conservation Subdivisions	43
Beacon Hill conservation subdivision property (KK)	44
Campbell Road (MM)	44
Elizabeth Lane (NN).....	45
First Light Lane (PP).....	45
Frazier Road, Duplexes above Tractor Supply (QQ).....	46
Washington Highway, across from Humble Heart Farm (RR).....	46
Blank template	47

Trails Open to The Public

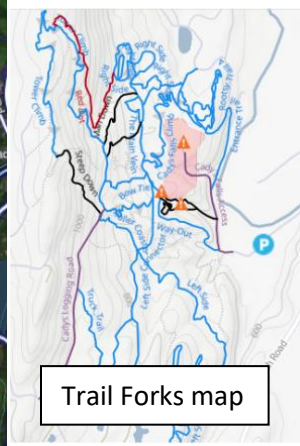
Trail Name/ Area	Anderson Lane (A)
Location	Cul de sac on Anderson Lane (private road)- conservation subdivision property, Fran Sladyk's map may show property in different place than where the trail is
Description- trail surface, difficulty, type of construction	This is a lollipop trail that crosses through a flat field from Anderson Lane, passes under the utility lines, and if travelled counterclockwise, heads into the woods and then a series of many switchbacks brings the user down a steep hemlock slope to a flat section that takes the user along Ryder Brook. The trail then heads back up the hill on an old woods road before making a few more switchbacks and returning to the lollipop handle (the last section of the trail is impassable due to briar growth). Difficulty is a Level 3 out of 5 due to steep slopes.
Trail length	Approximately 0.4 miles
Signage/ kiosk at trailhead	Yes
Users defined	No
Parking	Yes, marked with 2 signs mounted on posts on Anderson Lane cul de sac
Map	Yes, posted at trailhead
Wayfinding	Survey flags
Trail condition	Trees down
Presence on E911	No
Presence on heat maps	No
Online presence	No
Maintained by	?
Notes	Several large branches and small trees have fallen onto the trail. Thorned berry stems prevent completion of the loop. Trail laid out by Fran Slaydyk. Reviewed by Hilary Warner 11/14/25 and Hilary and Jeff Warner on 12/31/25. Not suitable for general public in current state.




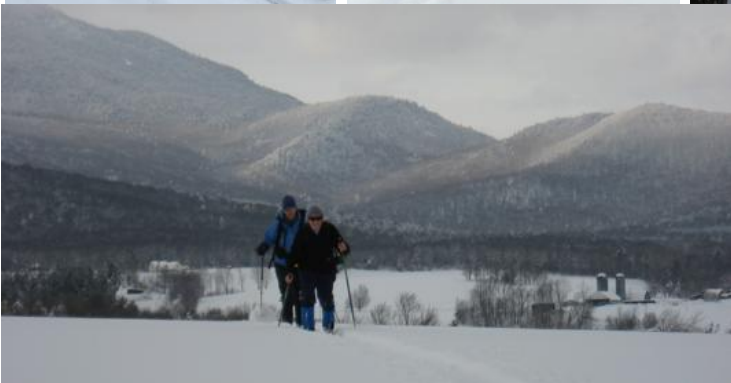
Trail Name/ Area	Beaver Meadow Trail, Beaver Meadow Cut off Trail, Whiteface Trail, and Chilcoot Pass Trail (B)
Location	Mount Mansfield State Forest beyond Beaver Meadow Road parking lot, east of Long Trail
Description- trail surface, difficulty, type of construction	Standard hiking trails. Beaver Meadow Trail and Beaver Meadow Cut Off are moderate. Chilcoot and Whiteface are more difficult (steeper). Difficulty 3-5.
Trail length	Beaver Meadow Trail 2.3 miles, Beaver Meadow Cut Off Trail 0.5 mile, Whiteface Trail 1.0 mile, Chilcoot Pass Trail 0.8 mile
Signage/ kiosk at trailhead	Yes
Users defined	No
Parking	Yes, at parking lot located at end of Beaver Meadow Rd
Map	Yes
Wayfinding	Yes
Trail condition	
Presence on E911	Yes
Presence on heat maps	Light presence on Strava
Online presence	Active Facebook page: facebook.com/GMCSterlingSection ,also Trail Forks, AllTrails, Strava
Maintained by	Sterling Section of Green Mountain Club maintains trails around Beaver Meadow and also the Long Trail from Chilcoot Pass to the Lamoille River footbridge
Notes	Beaver Meadow Trail goes to the Beaver Meadow Lodge. Trails described in Green Mountain Club book "Day Hiker's Guide to Vermont"



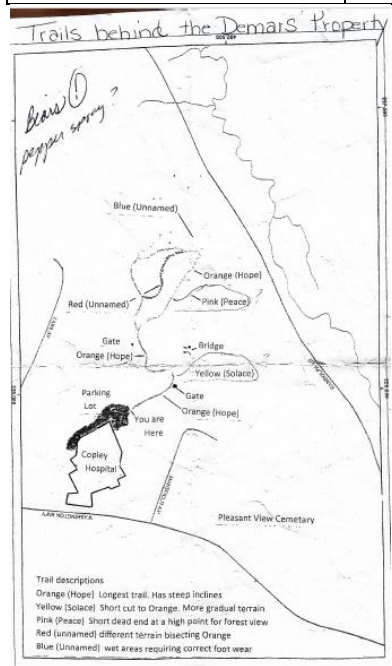
Trail Name/ Area	Cadys Falls Trails (C)
Location	Duhamel Road - Town forest and private property owners
Description- trail surface, difficulty, type of construction	Mostly hand built single track, some double track. Sledding hill in field. Twisty turny maze of trails with swooping descents. Intermediate to expert, 3-5. Can be challenging to find one's way around, even after many visits.
Trail length	13- 29 miles per AI.
Signage/ kiosk at trailhead	Kiosk at parking lot on Duhamel Rd. No information on kiosk (fall 2025) except for wooden closed/open sign that can be flipped over. 5/2026 there are also written notes about mud
Users defined	No, but popular with mountain and fat bikes, snowshoeing, walking, sledding, running
Parking	Yes for several vehicles (>8). Town rents the space for the parking per Judi Alberi 3/2026.
Map	On Trail Forks
Wayfinding	Minimal- there are a few landmarks (Round A Bout) and a sign that reads "Way Out"
Trail condition	Very good. Well drained and dry, frequent grade reversals direct water off trail and prevent erosion, and frequent turns control user speed.
Presence on E911	Yes, many trails but not all
Presence on heat maps	Yes, Strava
Online presence	https://www.facebook.com/ChucksBikes/ where Hank Glowiak updates trail info ("Cadys Falls Trail Report" and makes suggestions for volunteer trail work). Hank decides if trails are closed to biking due to mud, etc and announces on FB. Maps appear on Trail Forks, All Trails, and Ride with GPS. Strava heatmaps show significant activity (see below).
Maintained by	Trail users, especially Hank Glowiak from Chuck's Bikes, possibly landowners
Notes	Is this property "Town Forest" as shown on axisgis? What does that mean?



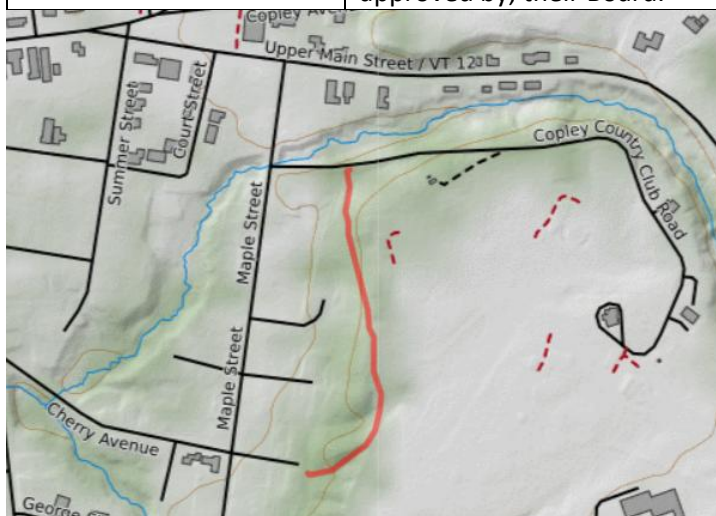
Trail Name/ Area	Catamount Trail (D)
Location	Back country skiing trail through Vermont from Massachusetts to Quebec border
Description- trail surface, difficulty, type of construction	The CTA website has detailed information about each of the trail sections including trail difficulty. Ranges from intermediate to expert. Difficulty 3-5
Trail length	300+ miles, divided into 31 sections that make for reasonable day tours. Section 24 travels 12 miles from Edson Hill Touring Center in Stowe to Ryder Brook Golf Club on Route 100 in Morristown (enters Morristown via Mt Mansfield State Forest, travels across Mud City Loop, Cole Hill Rd, Lyle McKee Rd, Stagecoach Rd, and Golf Course Rd before descending to Ryder Brook Golf Club. At times the trail follows the VAST corridor). Section 25 travels 14 miles from Ryder Brook Golf Club over Elmore Mountain, across Route 12 and on to Route 15 near the Mennonite Church (it goes to the south of Goeltz Rd, crosses Randolph Rd and heads up along and crossing Bliss Hill Rd, crosses Elmore Mountain Rd before going up and over Elmore Mountain to Elmore Village).
Signage/ kiosk at trailhead	N/A
Users defined	Yes
Parking	Yes- detailed in each of the section descriptions. Ryder Brook Golf Club in Morristown.
Map	Yes
Wayfinding	Yes: 
Trail condition	Depends on snow!
Presence on E911	Yes
Presence on heat maps	No
Online presence	Facebook (Catamount Trail Skiers), CTA website https://catamounttrail.org/the-cta/
Maintained by	Volunteers working with Catamount Trail Association
Notes	CTA obtains landowner permission to locate trail on public and private lands for winter skiing use. CTA leads free tours open to the public. Would be nice to have more access points in town and possibly some loops from the trail.



Trail Name/ Area	Copley Demars Trails (E)
Location	West side of Copley Hospital in ravine owned by Oneal "Sonny" Demars
Description- trail surface, difficulty, type of construction	Some are native surface single track, others are double track. Trails are marked with paint and named. Entrance/exit to trails is very steep and there are other steep sections. Well drained and no rocks. One trail is wet. Not heavily used. Includes newly constructed bridge in excellent condition. Difficulty 4 due to steepness.
Trail length	<1 mile
Signage/ kiosk at trailhead	There is a trailhead sign in the grass strip on the west side of the hospital-and parking lot see below. Trails are blazed with paint and there are some wood signs throughout.
Users defined	No
Parking	Hospital lot
Map	Yes, see below, not posted or published anywhere
Wayfinding	Yes
Trail condition	Good except steepness will make trails prone to erosion with any use
Presence on E911	No
Presence on heat maps	No
Online presence	None
Maintained by	?Sonny Demars
Notes	MCC looked into constructing steps for entrance/exit but cost was prohibitive.



Trail Name/ Area	Maple St to East Cherry Ave, woods parallel to Country Club (F)
Location	From Country Club Road through woods behind Maple St homes to East Cherry Ave
Description- trail surface, difficulty, type of construction	Double track, gradual incline and good condition from Country Club Rd to golf course. Trail from Country Club to East Cherry Avenue could use some water bars to prevent erosion. Difficulty 2-3.
Trail length	0.25 mile
Signage/ kiosk at trailhead	No
Users defined	No
Parking	No
Map	No
Wayfinding	No
Trail condition	Good
Presence on E911	No
Presence on heat maps	No
Online presence	No
Maintained by	Neighbors, nobody in particular
Notes	This is a nice neighborhood trail that allows residents to get outside and walk a little loop. It briefly goes along the edge of the Country Club so use should be formalized with, and approved by, their Board.

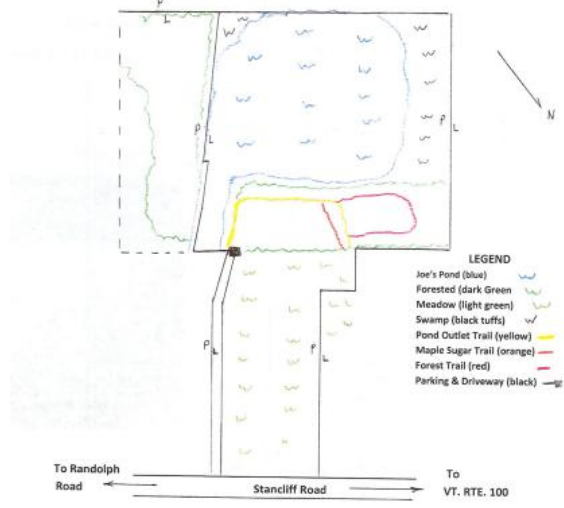


Hike over snow pile at end of East Cherry Ave to access path that leads to Copley Golf Course



Entrance to path from Copley Country Club Rd

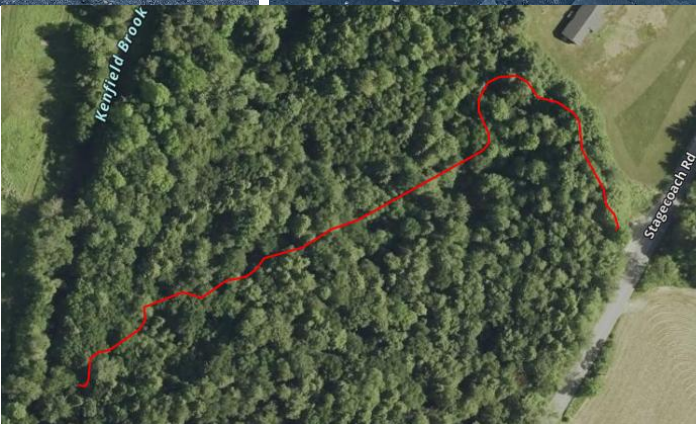
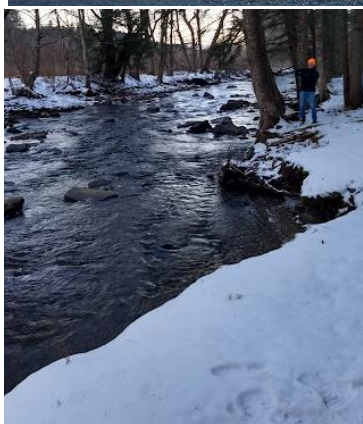
Trail Name/ Area	Joe's Pond (G)
Location	Stancliff Rd
Description- trail surface, difficulty, type of construction	Native trail surface, some double track/ old farm roads, some single track
Trail length	?
Signage/ kiosk at trailhead	Stowe Land Trust sign on Stancliff Road
Users defined	Yes, on SLT website: Fishing, hiking, hunting, Nordic skiing, dog walking, kayaking, snowshoeing, wildlife viewing
Parking	There is no established parking area—visitors should park along Stancliff Road taking care not to block any driveways. OR drive down the far left side of the hay field (between the property sign and the neighbor's house) and park in the lower left corner at treeline. ***Parking is intimidating and not inviting
Map	https://www.stowelandtrust.org/fileadmin/files/Photos/Maps/Joes_Pond_Brochure.pdf
Wayfinding	Painted blazes
Trail condition	?
Presence on E911	No
Presence on heat maps	No
Online presence	https://www.uvm.edu/fieldlabs/naturalareas/joes-pond-morristown Stowe Land Trust Joe's Pond - Stowe Land Trust
Maintained by	Stowe Land Trust, UVM
Notes	32 acres, conservation easement with Stowe Land Trust, owned by UVM. This property features diverse and rare wetland natural communities, mixed deciduous and coniferous forested areas for hiking and paddling access to the eight-acre open water of Joe's Pond..



Trail Name/ Area	<u>Kenfield Brook (H)</u>
Location	Stagecoach Road. Beginning from Bridge Street, drive south on Vermont Route 100 approximately ¾ mile. Turn right onto Morrystown Corner Rd./Walton Rd. Drive approximately ¾ mile. Turn right onto Stagecoach Rd. and drive approximately ¾ mile. The turnout for the property is on the left at the edge of the woods with a field just beyond. Park here and walk along the trail down to the river.
Description- trail surface, difficulty, type of construction	Trail starts as wide woods road, narrows to a foot path. Moderate grades. Native trail surface. Difficulty: 2 out of 5. More difficult if you venture into brook and hike up to falls.
Trail length	Approx 1/2 mile walk from parking to the Kenfield Brook per website. We measured <1/4 mile one way, parking lot to brook.
Signage/ kiosk at trailhead	No
Users defined	Yes, on River Conservancy website: hiking, fishing, photography
Parking	Yes, for several vehicles
Map	No. See track of trail below in red.
Wayfinding	Occasional piece of old surveyor tape
Trail condition	Good
Presence on E911	No
Presence on heat maps	No
Online presence	https://vermontriverconservancy.org/sites/terril-gorge
Maintained by	Caretaker is VT Department of Fish and Wildlife
Notes	10 acre parcel of conserved land. Reviewed by Hilary and Jeff Warner on 11/20/25



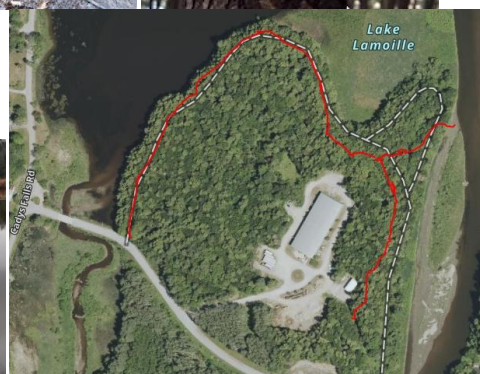
Parking on Stagecoach Road



Trail Name/ Area	<u>Kyrrland (I)</u>
Location	Private roads Morey Farm Rd and Hilltop Lane, off of Beacon Hill Rd
Description- trail surface, difficulty, type of construction	Trail built as part of conservation subdivision. Much of it is machine built and surface is down to mineral soil. Trail is wide, has some short steep pitches. There are rolling grade reversals to ensure that water flows off the trail. It goes close to several houses and crosses the private road. Level 3 out of 5.
Trail length	Lollipop shaped trail is 0.71 mile
Signage/ kiosk at trailhead	Trailhead is on right after turning onto Morey Farm Road, next to mailboxes. There is a banner at entrance showing development and trail and also a plastic coated piece of paper attached to a tree that says "Kyrrland Walking Trail"
Users defined	No
Parking	Not marked as such
Map	On banner at trailhead. Does not accurately reflect where trail goes between lots 6&7
Wayfinding	Non-existent but mostly easy to follow. The map shows an inner trail that we did not follow
Trail condition	Very good
Presence on E911 map	No
Presence on heat maps	No
Online presence	Kyrrland real estate listing accessed 11/11/25 and 6/1/26: "on-site walking trails, meadows and forests conserved for community recreational use."
Maintained by	?
Notes	Reviewed by Hilary and Jeff Warner on 11/12/25



Trail Name/ Area	Lake Lamoille Trail (J)
Location	North side of Bridge Street, Lake Lamoille
Description- trail surface, difficulty, type of construction	Much of trail is level and wide, following along a hemlock covered bluff above Lake Lamoille. There are some roots across the trail. There are 2 hills that are short and gradual with even surface. At the southeast end, the trail becomes more narrow, undulating, and uneven. Difficulty level: 2 out of 5
Trail length	~2 miles out and back
Signage/ kiosk at trailhead	Trailhead sign has deteriorated and is illegible.
Users defined	No
Parking	For 2 vehicles
Map	Trail is included on list of trails to explore in M'town on MCC website, but there is no map on website. Open source map shows trail looping around in a "U" shape- but the existing southeast portion of the trail just ends, it does not continue to Bridge St, possibly because the full sun there allows the vegetation to take over the trail.
Wayfinding	Minimal wayfinding markers (occasional Morristown Trails hoof print).
Trail condition	Entrance is muddy and wet and in need of maintenance. Otherwise, the trail is dry and free of blowdowns and encroaching vegetation.
Presence on E911	Yes
Presence on heat maps	
Online presence	Included in Open source mapping (OnX), Town website
Maintained by	Unknown, Ron Stancliff says MSI is responsible for maintaining. This needs to be confirmed.
Notes	On conservation subdivision map- is it one? Reviewed by Hilary & Jeff Warner 11/26/25.



Trail Name/ Area	Lamoille County Nature Center (K)
Location	1666 Cole Hill Road
Description- trail surface, difficulty, type of construction	Forty-acre nature preserve of diverse habitat owned and operated by Lamoille County Conservation District. The preserve offers self guided nature trails, a small pond, a pavilion (available for rent), a council size Sioux teepee (seasonal) and tiny cabin where summer programs take place. Boardwalk leaves parking area, single track and double track, all native surface. Difficulty 2-3
Trail length	About 1.25 miles total, on both sides of Cole Hill Road
Signage/ kiosk at trailhead	Yes
Users defined	No
Parking	Yes
Map	Find at https://www.lcnrcd.com/nature-center , available as pdf
Wayfinding	Yes
Trail condition	
Presence on E911	No
Presence on heat maps	No
Online presence	https://www.lamoillenrcd.org/nature-center https://www.facebook.com/LamoilleCountyConservationDistrict/
Maintained by	Lamoille County Conservation District
Notes	Self guided activities on their website

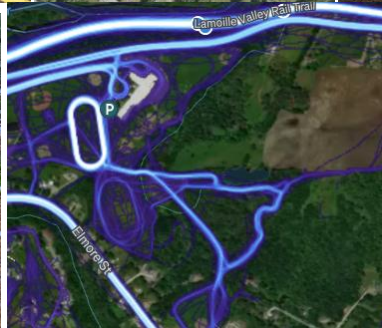
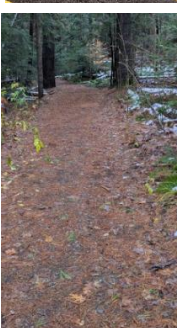
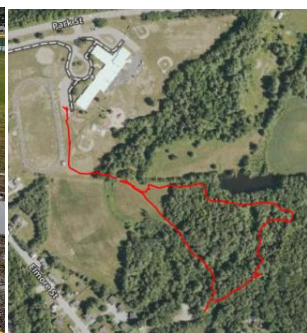


Trail Name/ Area	Lamoille Valley Rail Trail (L)
Location	Trail goes from St. Johnsbury to Swanton. Morrisville is at mile 48.
Description- trail surface, difficulty, type of construction	Crushed stone aggregate. Easy- level 1 out of 5.
Trail length	94 miles
Signage/ kiosk at trailhead	Kiosk located at bottom of Pleasant St, east of RK Miles. Other access points: Brooklyn St, path down to trail from Park St, path from townhomes at Railroad Lane, informal parking at Darling Road.
Users defined	Yes: All non-motorized uses are allowed, with the exception of snowmobiles, motorized wheelchairs, and authorized maintenance vehicles. E-bikes are permitted. Motorbikes, ATVs, and ORVs are not permitted on the trail.
Parking	Official parking at Oxbow Park, 257 Pleasant St. Also in Wolcott at 28 Railroad St and in Hyde Park on Depot St Extension. There is limited parking on Darling Road, overnight parking at the airport with permission.
Map	On website: https://railtrails.vermont.gov/trails/lamoille-valley-rail-trail/
Wayfinding	Kiosks in towns, markers every mile, towns working on in-town wayfinding to businesses
Trail condition	Excellent
Presence on E911	Yes
Presence on heat maps	Yes
Online presence	Facebook https://www.facebook.com/groups/403466358519107/ , Rail Trail website https://railtrails.vermont.gov/trails/lamoille-valley-rail-trail/
Maintained by	VT Agency of Transportation. Jackie Cassino Rail Trails Program Manager 802.505.8193 Jackie.Cassino@vermont.gov

Notes

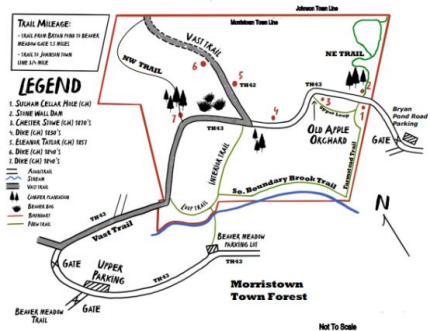


Trail Name/ Area	Morristown Schools Trails (M)
Location	Behind MES
Description- trail surface, difficulty, type of construction	Professionally built wide trail, stone gravel surface. Moderate grades. Easy- level 2 out of 5. There are also trails cut for what appears to be XC skiing but they were very wet on 11/16/25.
Trail length	3/4 mile.
Signage/ kiosk at trailhead	No
Users defined	No
Parking	Yes, not specific for trail, but at MES.
Map	No
Wayfinding	No
Trail condition	Very good. Some wet spots/puddles in flat area.
Presence on E911	No
Presence on heat maps	Yes, significant heat on Strava
Online presence	Strava only
Maintained by	<p>School. Statement from PA and athletics via Cara Hancy 12/2025: Peoples Academy welcomes the community to use our cross-country ski trails. We have an enjoyable network of trails that are carefully groomed by volunteers and our coaches. Grooming is a delicate, difficult and time consuming task. Therefore, when using the trails please consider the following:</p> <ul style="list-style-type: none"> • Please use the groomed trails for skiing and snowshoeing only • When snowshoeing, please stay as far to one side of the trail as possible • Walking, running, and walking dogs can leave deep holes (post holes) in the trails that can create hazardous situations for our skiers, some who are very young. • If you need to cross a trail, please do so in single file leaving as little impact as possible • For after school recreational skiers, please do not ski with large groups during practice time (3:15-4:45 M-F). (We have a large team of more than 40 students.) <p>Again, we do welcome and encourage people to get outside in the winter and use the trails. However, the trails are very challenging to manage with fluctuating weather and we appreciate your willingness to be thoughtful and respectful when using the trails.</p>
Notes	Reviewed by Jeff and Hilary Warner 11/16/25

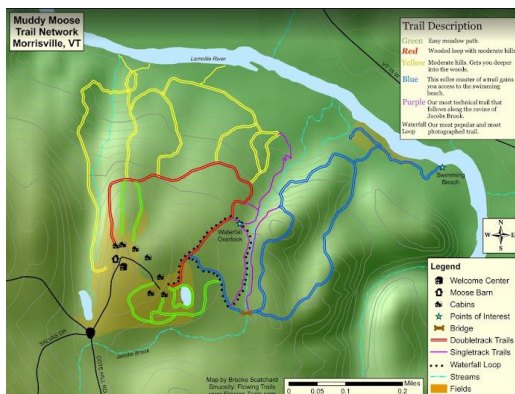


Strava heat map

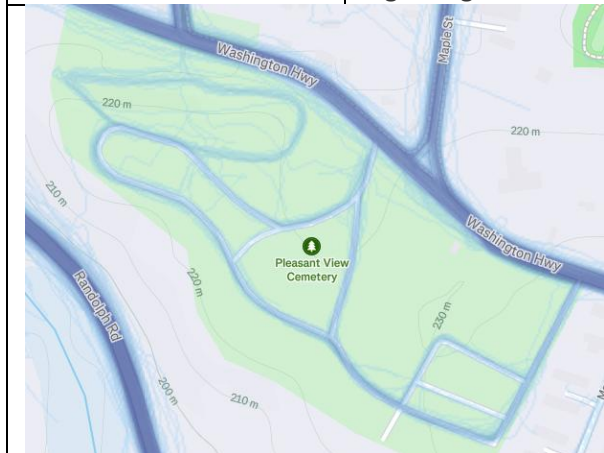
Trail Name/ Area	Morristown Town Forest (N)
Location	Trailheads at end of Beaver Meadow Rd and Bryan Pond Rd
Description- trail surface, difficulty, type of construction	Native surface, hand-built trails. Level 3-4 out of 5.
Trail length	3.5-4 miles total
Signage/ kiosk at trailhead	2 kiosks at Beaver Meadow lot
Users defined	No
Parking	Available for multiple cars at Beaver Meadow and Bryan Pond parking areas
Map	(2)- one is hand drawn and another is made by VT Forests and Parks, see below
Wayfinding	Moose print yellow plastic blazes, signs
Trail condition	Wet sections on Interior Trail with frequent use of corduroy. Wet area at start of Farmstead Trail near Upper Loop. Upper Loop trail has grown in.
Presence on E911	Yes
Presence on heat maps	Small amount of heat shown on Strava
Online presence	https://www.morristownvt.gov/conservation-commission/page/trails-explore-morristown
Maintained by	Morristown Conservation Commission
Notes	Northeast and Northwest Trails appear on some maps and have signs but are not complete- both need sustainability assessment



Trail Name/ Area	Muddy Moose (P)
Location	2930 Cote Hill Road
Description- trail surface, difficulty, type of construction	Mostly old skidder/logging roads, some with steep grades; hand built single track along Jacob Brook waterfall trail
Trail length	Approximately 5 miles
Signage/ kiosk at trailhead	To be developed by Stowe Land Trust
Users defined	No
Parking	To be developed by Stowe Land Trust
Map	Yes, will need updating to reflect trails re-routed away from dwellings
Wayfinding	Painted blazes- colors do not match map
Trail condition	TBD by Stowe Land Trust hired consultant
Presence on E911	No
Presence on heat maps	No
Online presence	No
Maintained by	Stowe Land Trust
Notes	Grassy area near proposed parking and along river will quickly become impassable without mowing

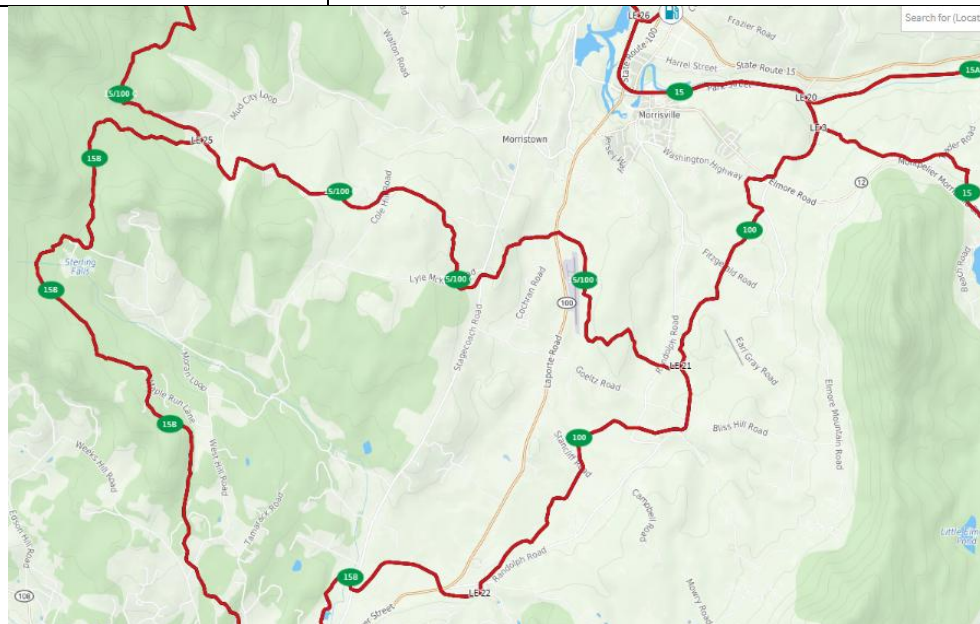


Trail Name/ Area	Pleasant View Cemetery (Q)
Location	Washington Highway
Description- trail surface, difficulty, type of construction	20 acre cemetery with gravel service roads throughout. Difficulty: level 2 out of 5.
Trail length	
Signage/ kiosk at trailhead	
Users defined	
Parking	
Map	
Wayfinding	
Trail condition	
Presence on E911	Yes
Presence on heat maps	Yes, Strava
Online presence	Town website has info about history and Strava shows heat (see below)
Maintained by	Town of Morristown
Notes	<p>Cemetery provides a nice place to walk in Village, adds to loops from Maple and Congress Streets. Beautiful views of Green Mountains and Elmore Mountain. Retention pond with chorus of peepers in spring. Turkey vultures sometimes roost in pines on west edge.</p> <p>FPP 12/22/25 from Dennis Smith: Although not specifically mentioned (in the rules and regulations), sledding and cross country skiing seem inappropriate in the cemeteries. Not only are these activities disrespectful to the deceased and their families, they can also be dangerous if a short grave marker might be covered by snow. Cemeteries are not recreation destinations. Please use some of the fine facilities available in the area. Bill Mason responded: While I generally agree about the recreational use of cemeteries I will point out that I have lived in towns and cities in Maine and Pennsylvania where people run, roller blade, bicycle, attend organized walks and tours (some that required paying a fee). I'm sure I have missed some uses. These were legal and in most cases, encouraged. The cemeteries were proud to provide a tranquil location and embraced the opportunity to share the history prevalent throughout the property. I think it behooves any cemetery to post allowed or prohibited uses. Without specifics you will get a variety of interpretations of vague wording regarding decorum.</p>



Trail Name/ Area	Story Stroll at Lamoille Family Center (SS)
Location	480 Cadys Falls Road
Description- trail surface, difficulty, type of construction	
Trail length	
Signage/ kiosk at trailhead	Yes
Users defined	
Parking	Yes
Map	
Wayfinding	Yes
Trail condition	
Presence on E911	No
Presence on heat maps	No
Online presence	Lamoille Family Center Facebook
Maintained by	5/2026 LFC's Facebook says that TurtleFur employees have been reinvigorating the trail
Notes	Confirmed it is open to the public 6/2/26

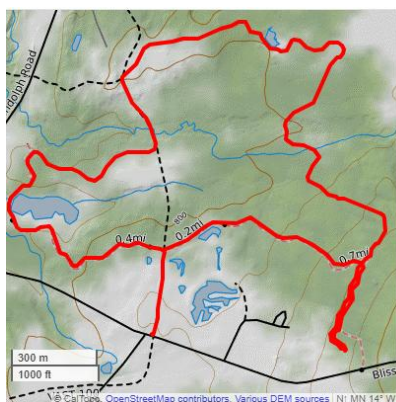
Trail Name/ Area	VAST (R)
Location	Throughout Morristown- see map below
Description- trail surface, difficulty, type of construction	
Trail length	
Signage/ kiosk at trailhead	
Users defined	Need to check on access for XC skiing and fat biking
Parking	
Map	Online: https://vast.evtrails.com/#
Wayfinding	Yes
Trail condition	
Presence on E911	Yes
Presence on heat maps	
Online presence	https://www.facebook.com/snopackerslc/
Maintained by	VAST volunteers
Notes	Dustin Turner is Lamoille County VAST contact



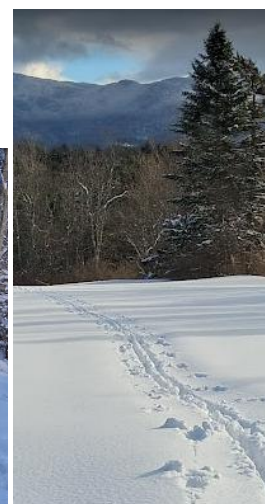
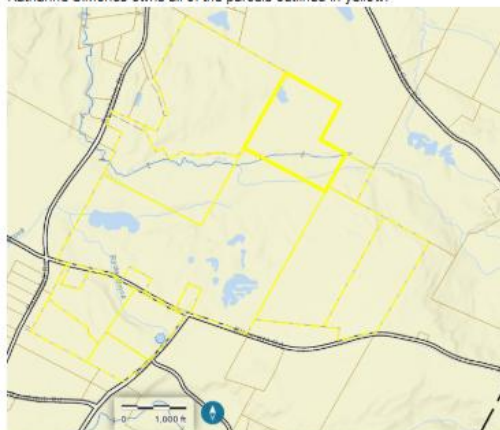
Trail Name/ Area	Valcour Bog- links Joe's Pond and Morristown Bog Natural Area (S)
Location	Access via ROW on Gray Farm Road; Joe's Pond property; VAST trail in winter; or Morristown Bog Natural Area which has access off Route 100.
Description- trail surface, difficulty, type of construction	?
Trail length	?
Signage/ kiosk at trailhead	?
Users defined	Per SLT website: The property is available to the general public for all types of non-motorized dispersed recreational and education purposes including, but not limited to, bird watching, botanizing, cross-country skiing, fishing, hiking, snowshoeing, walking, and wildlife observation. Hunting and trapping are only permitted in the agricultural portion of the property, not in the bog.
Parking	
Map	
Wayfinding	
Trail condition	
Presence on E911	
Presence on heat maps	
Online presence	https://www.stowelandtrust.org/work/land-protection/conserved/valcour-bog <input type="checkbox"/> Facebook <input type="checkbox"/> Open source mapping <input type="checkbox"/> Trail Forks <input type="checkbox"/> AllTrails <input type="checkbox"/> Strava <input type="checkbox"/> Town website
Maintained by	
Notes	29 acres (18.5 acres bog, 10.6 acres to the east is agricultural), privately owned, conserved by Stowe Land Trust 2007. Links Joe's Pond and Morristown Bog Natural Area.

Existing Trails on Private Property

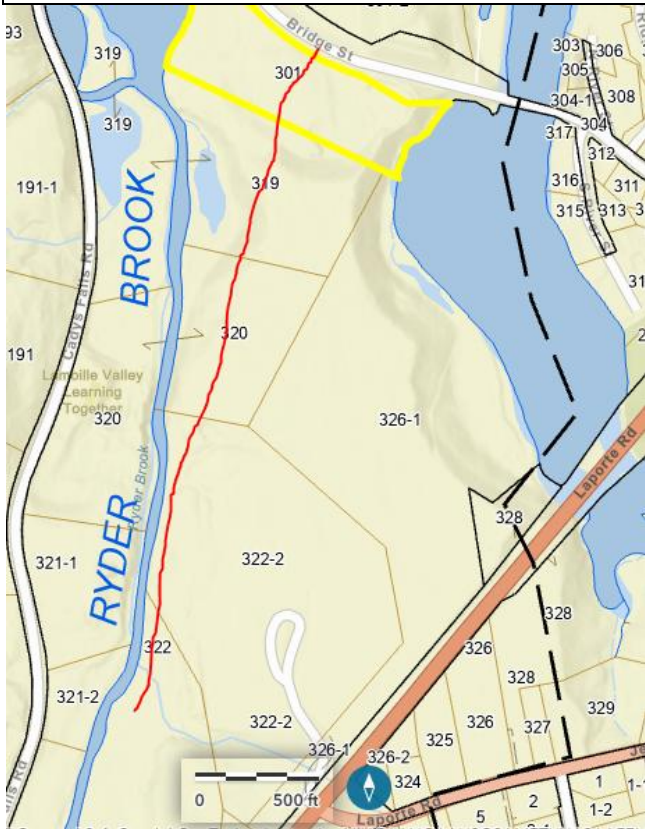
Trail Name/ Area	Bliss Hill Trails (T)
Location	Bliss Hill and Randolph Roads
Description- trail surface, difficulty, type of construction	>400 acre property owned by Katherine Simonds. Catamount Trail and VAST go through the property. People park on Neuland Rd to access property for XC skiing. There are open fields, some farmed for hay, wooded areas with woods roads, views in many directions, and several man made ponds. Terrain is flat and rolling and would be accessible for many. Her husband's obituary indicates he worked with the state to improve wildlife habitat on his land. Abuts Hursh Farm which is conserved by Vermont Land Trust.
Trail length	~3 miles
Signage/ kiosk at trailhead	No
Users defined	No
Parking	Unofficial, on Neuland Rd
Map	No
Wayfinding	No
Trail condition	Excellent for XC skiing
Presence on E911	No
Presence on heat maps	No
Online presence	No
Maintained by	? The trail is sometimes groomed in winter
Notes	This area would be a wonderful opportunity for conservation and formalized public access.



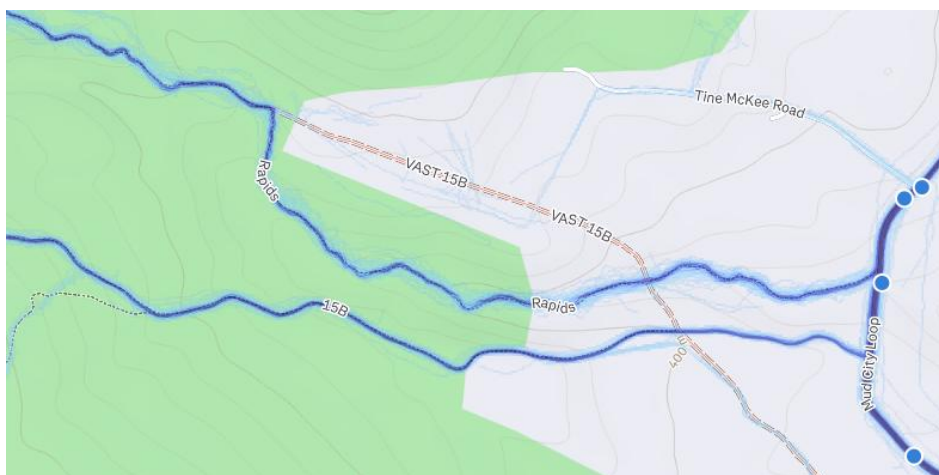
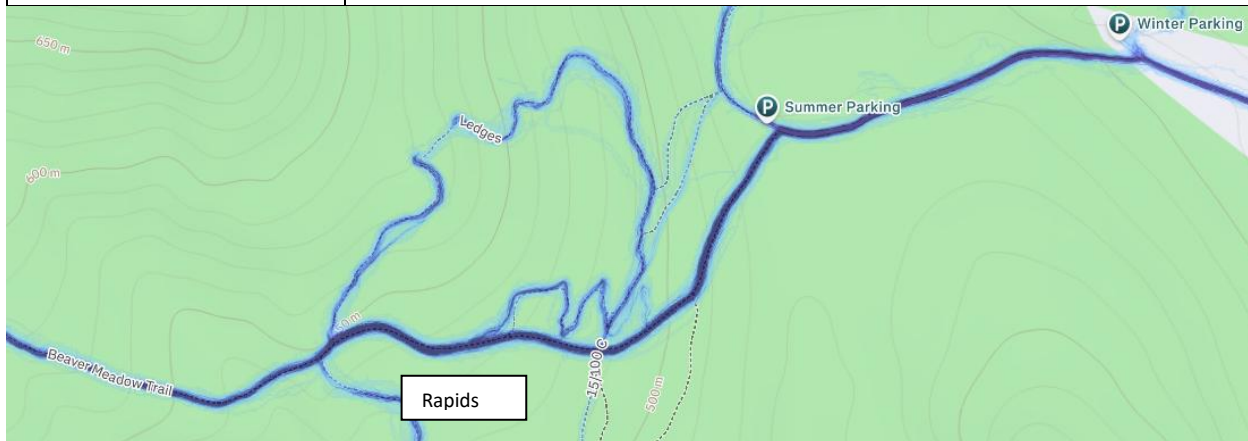
Katharine Simonds owns all of the parcels outlined in yellow:



Trail Name/ Area	Bridge St to All Saint's along Ryder Brook to Demars Properties land (U)
Location	Not an official trail, private property
Description- trail surface, difficulty, type of construction	Leaving from the firewood landing on Bridge St, there is a wide woods trail that travels over property owned by the Family Center and Morrisville Water and Light, into shrubby growth and then hemlock woods behind All Saint's School (on their property), and potentially, proceeds along to a meadow owned by Demars Properties. There is a beautiful section of Ryder Brook with a bench directly behind the school. Trail is approximated in red on the map below.
Trail length	
Signage/ kiosk at trailhead	
Users defined	
Parking	
Map	
Wayfinding	
Trail condition	
Presence on E911	
Presence on heat maps	
Online presence	
Maintained by	
Notes	Ron Stancliff said: MCC reportedly has had meetings with them in the past to promote an easement. All Saint's is ambivalent about having the public so close to school



Trail Name/ Area	Rapids, Ledges, and 15B- Mud City/ Beaver Meadow area (V)
Location	15B: Connects Mud City to Sterling Valley.
Description- trail surface, difficulty, type of construction	Hand built single track mountain bike trails. In Mount Mansfield State Forest and on private property
Trail length	?
Signage/ kiosk at trailhead	Not for this trail
Users defined	No
Parking	Yes, at Beaver Meadow lot
Map	No
Wayfinding	No
Trail condition	?
Presence on E911	
Presence on heat maps	Strava maps copied below
Online presence	
Maintained by	Local trail users
Notes	Some are rogue trails built on state land



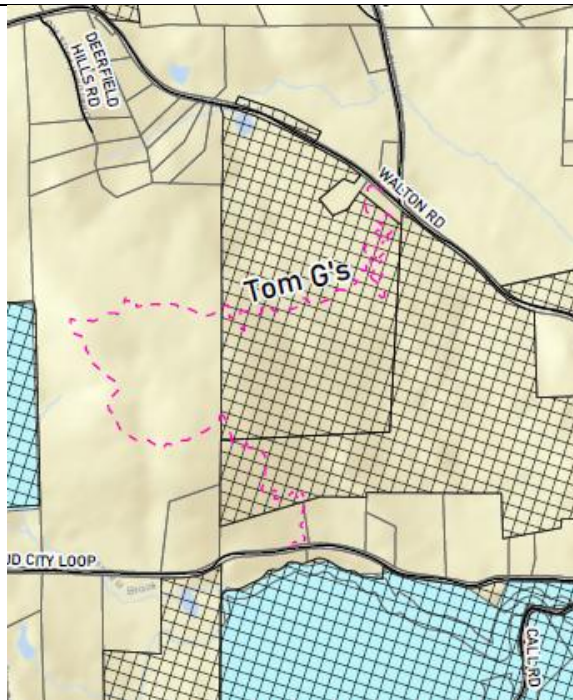
Trail Name/ Area	Rail Trail Lane to LVRT connector (W)
Location	Rail Trail Lane, adjacent to LVRT- conservation subdivision property?
Description- trail surface, difficulty, type of construction	Very short trail that connects LVRT to Rail Trail Lane apartments. Machine built, stone surface.
Trail length	
Signage/ kiosk at trailhead	No
Users defined	No
Parking	N/A
Map	No
Wayfinding	No
Trail condition	Very good but could be prone to erosion due to grade
Presence on E911	No
Presence on heat maps	No
Online presence	<input type="checkbox"/> Facebook <input type="checkbox"/> Open source mapping <input type="checkbox"/> Trail Forks <input type="checkbox"/> AllTrails <input type="checkbox"/> Strava <input type="checkbox"/> Town website
Maintained by	
Notes	Nice way to walk or ride to Hair Etc and Fred's while avoiding Bridge St and Route 100 crossing



Trail Name/ Area	Park St to LVRT connector (X)
Location	251 Park St PRIVATE PROPERTY- Bourne Properties, Middleboro MA
Description- trail surface, difficulty, type of construction	Gravel surface, benched into hillside, steep slope but not excessively so, erosion at bottom makes footing more difficult. Knotweed threat! Level 3 out of 5.
Trail length	200'
Signage/ kiosk at trailhead	No
Users defined	No
Parking	No
Map	No
Wayfinding	No
Trail condition	Some erosion at bottom (see photo marked with red circle), knotweed threat
Presence on E911	No
Presence on heat maps	
Online presence	<input type="checkbox"/> Facebook <input type="checkbox"/> Open source mapping <input type="checkbox"/> Trail Forks <input type="checkbox"/> AllTrails <input type="checkbox"/> Strava <input type="checkbox"/> Town website
Maintained by	
Notes	Frequently used, useful link to LVRT, makes nice loop in town with LVRT possible



Trail Name/ Area	Tom G's-Mud City Loop to Walton Road (Y)
Location	Goes from Mud City between Kevin Lane's and Victoria Reichelt's over to Walton Rd near Fontaine Rd.
Description- trail surface, difficulty, type of construction	
Trail length	
Signage/ kiosk at trailhead	
Users defined	
Parking	No
Map	
Wayfinding	
Trail condition	
Presence on E911	Yes
Presence on heat maps	Yes, lots of heat on Strava, see below
Online presence	<input type="checkbox"/> Facebook <input type="checkbox"/> Open source mapping <input type="checkbox"/> AllTrails <input type="checkbox"/> Strava <input type="checkbox"/> Town website
Maintained by	
Notes	On private land. Land owned by Joshua Allaire, Caper Mtn Ranch LLC, and Susan Newberger Trust. We were given contact name for davidgagnonn@gmail.com who was organizing work days fall 2025.

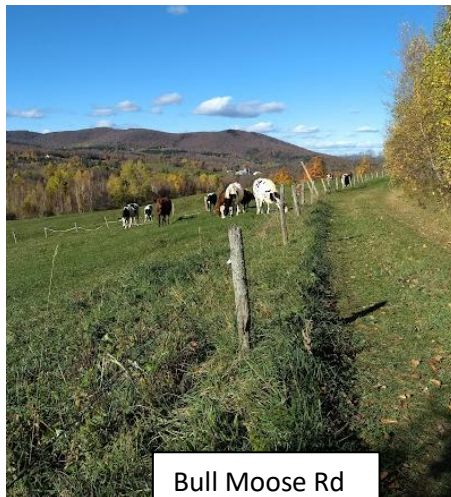


Possibilities for Future Trails

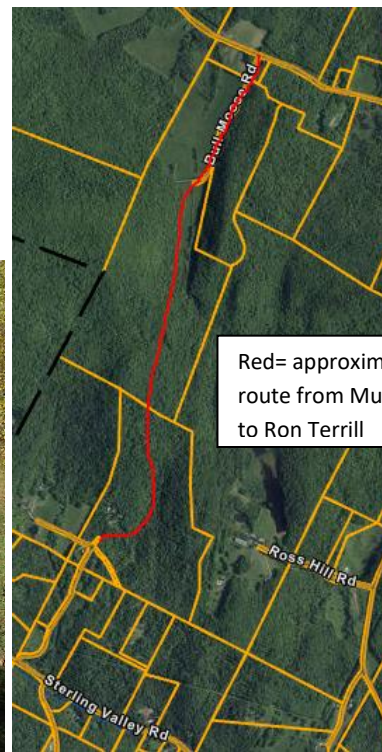
Trail Name/ Area	Bugbee Springs (Z)
Location	Route 15 E, gated logging road next to Gondolas Snack bar
Description- trail surface, difficulty, type of construction	Unimproved logging roads, no "hiking" trails
Trail length	?
Signage/ kiosk at trailhead	No
Users defined	No
Parking	?
Map	No
Wayfinding	No
Trail condition	Rough
Presence on E911	No
Presence on heat maps	No
Online presence	<input type="checkbox"/> Facebook <input type="checkbox"/> Open source mapping <input type="checkbox"/> Trail Forks <input type="checkbox"/> AllTrails <input type="checkbox"/> Strava <input type="checkbox"/> Town website
Maintained by	?
Notes	82 acres, owned by Village/ MWL, recently logged. Not sure what potential this area might have but not very enticing after initial visit.



Trail Name/ Area	Bull Moose Road (class 4 road) to private property (AA)
Location	Until recently, one could run or bicycle from Mud City Loop to Ron Terrill Rd. The route followed class 4 Bull Moose Road, a short bushwhack, and a woods road/trail (on private property owned by the Rooney's and Todd Pinkham and Megan Treadwell) to Ron Terrill Rd. The rumor is that the property owners on the Ron Terrill end have posted it, perhaps in response to large groups of trail users coming through.
Description- trail surface, difficulty, type of construction	Class 4 Road, woods road, bush whack. Do not recall it being wet.
Trail length	
Signage/ kiosk at trailhead	
Users defined	
Parking	
Map	
Wayfinding	
Trail condition	
Presence on E911	
Presence on heat maps	A littlebit on Strava
Online presence	<input type="checkbox"/> Facebook <input type="checkbox"/> Open source mapping <input type="checkbox"/> Trail Forks <input type="checkbox"/> AllTrails <input type="checkbox"/> Strava <input type="checkbox"/> Town website
Maintained by	
Notes	Beautiful and great connector to and from Sterling Valley. It would be great if an agreement could be worked out with the private landowners to allow recreational trail use through this area.



Bull Moose Rd



Red= approximate route from Mud City to Ron Terrill

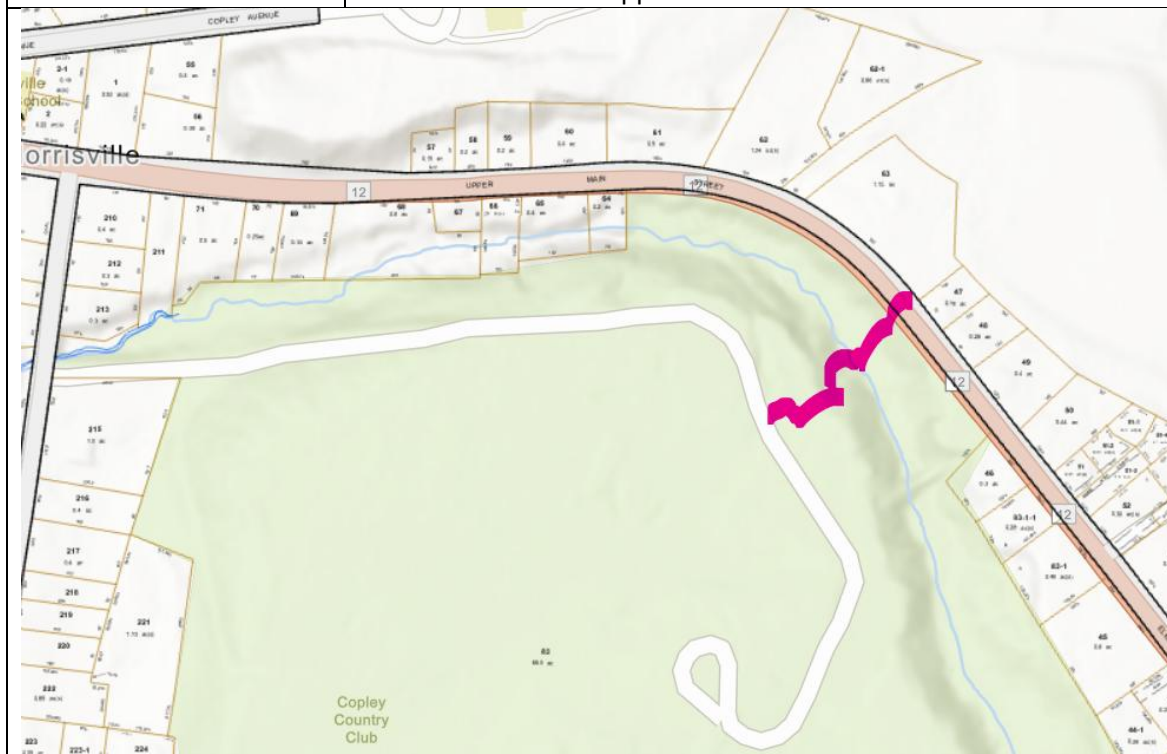
Trail Name/ Area	Clark Park (BB)
Location	Property in Village along Lamoille River between Bridge St, Feline Loop, and Route 100/Laporte Rd
Description- trail surface, difficulty, type of construction	Beautiful area in Village adjacent to hydro power dam, waterfalls, dramatic rock faces, nice combination of science, technology, nature, and history.
Trail length	
Signage/ kiosk at trailhead	
Users defined	
Parking	Access from Park and Ride lot at Bridge St and Route 100 Bypass
Map	
Wayfinding	
Trail condition	
Presence on E911	
Presence on heat maps	
Online presence	<input type="checkbox"/> Facebook <input type="checkbox"/> Open source mapping <input type="checkbox"/> Trail Forks <input type="checkbox"/> AllTrails <input type="checkbox"/> Strava <input type="checkbox"/> Town website
Maintained by	
Notes	https://www.vtcng.com/news_and_citizen/news/local_news/in-morrisville-clark-park-the-park-that-never-was/article_3f84aebc-118b-11ec-b29c-83a8ef7b2207.html



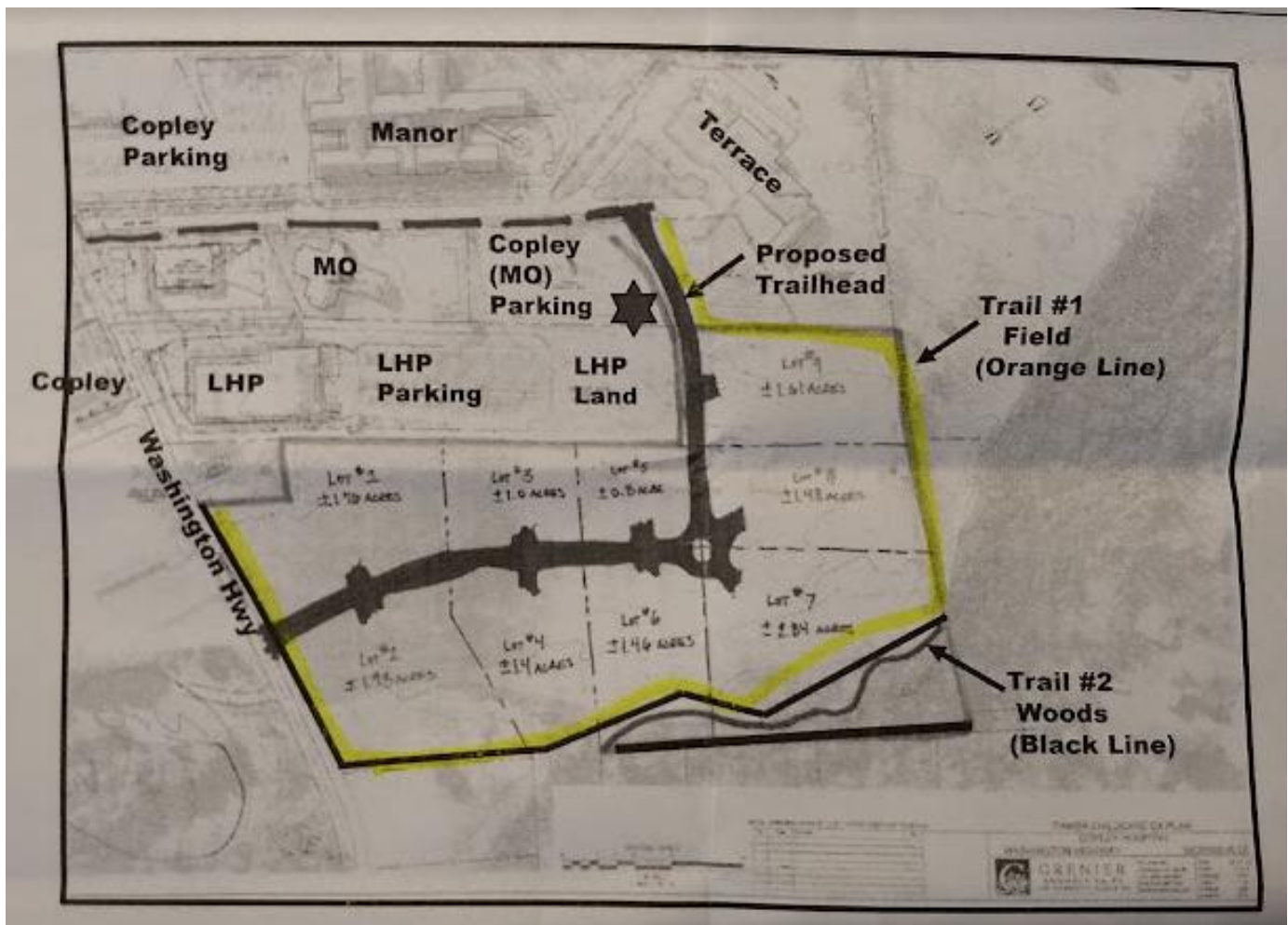
Trail Name/ Area	Copley Country Club (CC)
Location	Maple Street
Description- trail surface, difficulty, type of construction	People walk up the paved driveway and sometimes on the course during the off season. People also XC ski. But it is not publicized as a venue for this.
Trail length	
Signage/ kiosk at trailhead	
Users defined	
Parking	
Map	
Wayfinding	
Trail condition	
Presence on E911	
Presence on heat maps	
Online presence	<input type="checkbox"/> Facebook <input type="checkbox"/> Open source mapping <input type="checkbox"/> Trail Forks <input type="checkbox"/> AllTrails <input type="checkbox"/> Strava <input type="checkbox"/> Town website
Maintained by	
Notes	There must be some opportunities for collaboration here. Consider Beaver Meadow Golf Course in Concord NH: “We are one of New England's Oldest Golf Courses established in 1896. We welcome the public to come out and enjoy our course. Beaver Meadow is a year round destination with two indoor golf simulators, <i>outdoor ice skating and cross country skiing in the winter months</i> and full 18 Hole golf course during the warmer months.



Trail Name/ Area	Copley Country Club to Elmore St connecter (DD)
Location	
Description- trail surface, difficulty, type of construction	
Trail length	
Signage/ kiosk at trailhead	
Users defined	
Parking	
Map	
Wayfinding	
Trail condition	
Presence on E911	
Presence on heat maps	
Online presence	<input type="checkbox"/> Facebook <input type="checkbox"/> Open source mapping <input type="checkbox"/> Trail Forks <input type="checkbox"/> AllTrails <input type="checkbox"/> Strava <input type="checkbox"/> Town website
Maintained by	
Notes	Could a walking loop be created by making a trail/path from Elmore St over the culvert that crosses the stream? Approximate location shown below



Trail Name/ Area	Copley and Lamoille Health Partners area (EE)
Location	
Description- trail surface, difficulty, type of construction	
Trail length	
Signage/ kiosk at trailhead	
Users defined	
Parking	
Map	
Wayfinding	
Trail condition	
Presence on E911	
Presence on heat maps	
Online presence	<input type="checkbox"/> Facebook <input type="checkbox"/> Open source mapping <input type="checkbox"/> Trail Forks <input type="checkbox"/> AllTrails <input type="checkbox"/> Strava <input type="checkbox"/> Town website
Maintained by	
Notes	This trail was proposed and discussed around 2023. Jenn Holton Clapp was involved. Current status unknown.



From <https://www.copleyvt.org/new-collaborative-focuses-on-wellness/> accessed 5/31/26: A new health initiative comprised of employees from Copley Hospital, Lamoille Health Partners (LHP), and Lamoille Home Health & Hospice (LHH&H) had its first meeting to discuss common goals for community wellness. In late May a specific committee formed to discuss using a nearby piece of land to develop walking trails for patients, families, and community members. The initiative's goal is to make it easier for people to get out and get exercise in a way that, in the words of committee member (and Copley Board Vice Chair), Anne Bongiorno is "accessible, affordable, and acceptable."

According to LHH&H Chief Operating Officer Jennifer Holton Clapp, (who initially wrote a grant for funds to develop the walking trail), the idea is to improve patient, staff, and community health by developing a walking and nature trail across 13 acres of land off Washington Highway adjacent to LHP recently purchased by Copley. "The land touches or is adjacent to three of our organizations," she said, "and our hope is to create a space that patients in recovery, families of patients, and staff members can use for exercise and quiet reflection. I might even use the word restoration."

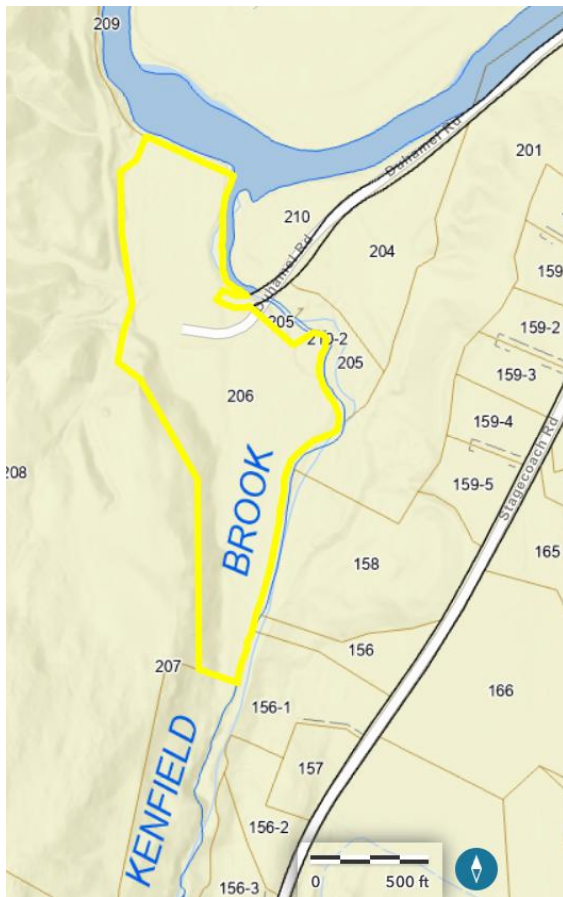
As part of the project, the wellness committee will look into laying down surface material to make the trail more accessible to walkers with disabilities and to purchasing exercise equipment to scatter along the way. "Over the coming weeks and months," she said, "we'll be walking the trails to envision what we might be able to do, with an initial goal of being able to open the trails this coming fall. We'll also be looking into various grants that are available to build and maintain these kinds of recreational areas."

Down the road, the new initiative hopes to hold a health fair and to look at other ways to work together to serve the needs of community members that all three organizations share. This is a goal that committee member Anne Bongiorno feels is important.

"While our initial work will be to develop the walking trails," Bongiorno said, "we hope in the future to begin looking at how all three organizations might share resources and, jointly, examine the current and future healthcare needs of our communities in order to create a continuum of care right here in Lamoille County." In time, she said, that may also involve including other healthcare providers in the area such as Lamoille County Mental Health Services.

The overall goal of our work, Bongiorno said, will be to make sure we are providing holistic, person-centered care that is available across all sectors of the Lamoille County healthcare landscape so patients don't have to travel long distances for care. "Initially, we'll be looking at community wellness and building the walking trails. In time, we hope to address the larger question of: are we providing the kinds of accessible healthcare that our populations need and deserve? Through our collaborative efforts, we hope to answer that question in the affirmative." In the meantime, be watching for activity in the woods as the wellness collaborative begins its work.

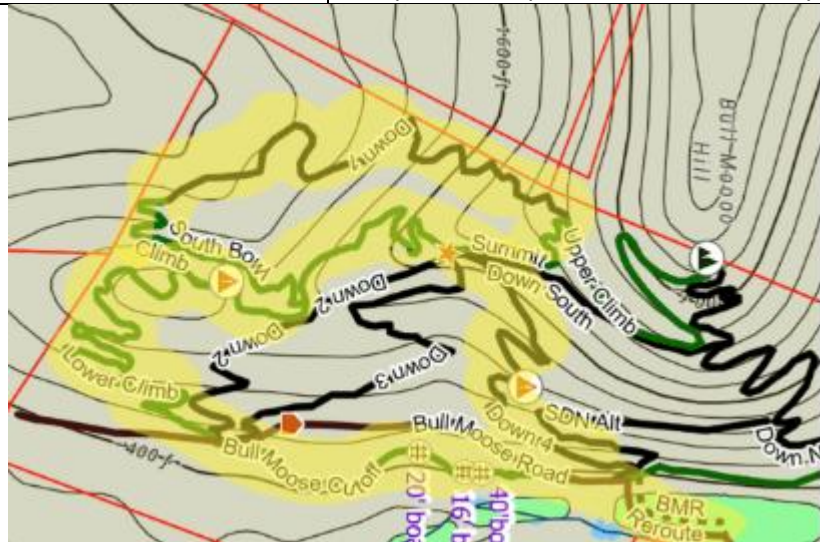
Trail Name/ Area	Duhamel Rd through old Cady's Falls Nursery to Kenfield Brook (FF)
Location	
Description- trail surface, difficulty, type of construction	
Trail length	
Signage/ kiosk at trailhead	
Users defined	
Parking	
Map	
Wayfinding	
Trail condition	
Presence on E911	
Presence on heat maps	Yes
Online presence	<input type="checkbox"/> Facebook <input type="checkbox"/> Open source mapping <input type="checkbox"/> Trail Forks <input type="checkbox"/> AllTrails <input checked="" type="checkbox"/> Strava <input type="checkbox"/> Town website
Maintained by	
Notes	With State purchase of Cadys Falls Nursery (outlined in yellow), is there potential for trail that goes up Kenfield Brook and connects to lot 158?



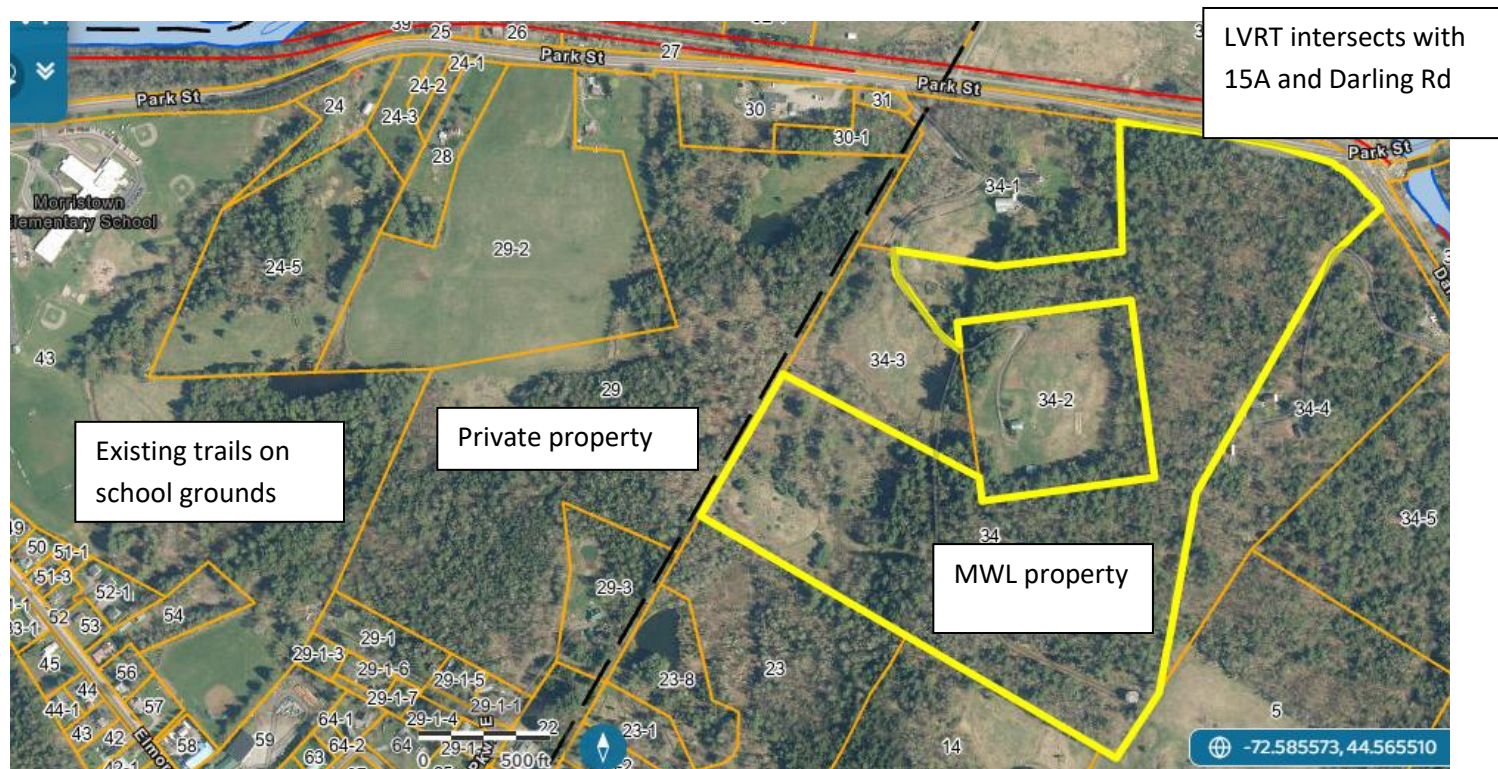
Trail Name/ Area	Main St to Bridge St at MoBev (GG)
Location	
Description- trail surface, difficulty, type of construction	
Trail length	
Signage/ kiosk at trailhead	
Users defined	
Parking	
Map	
Wayfinding	
Trail condition	
Presence on E911	
Presence on heat maps	
Online presence	<input type="checkbox"/> Facebook <input type="checkbox"/> Open source mapping <input type="checkbox"/> Trail Forks <input type="checkbox"/> AllTrails <input type="checkbox"/> Strava <input type="checkbox"/> Town website
Maintained by	
Notes	Could there be a trail/path that connects Lower Main Street to Bridge Street?



Trail Name/ Area	Rooney Farm (HH)
Location	Mud City Loop
Description- trail surface, difficulty, type of construction	Mountain bike trails
Trail length	10-15 miles
Signage/ kiosk at trailhead	
Users defined	Yes, mountain biking
Parking	
Map	
Wayfinding	
Trail condition	
Presence on E911	
Presence on heat maps	
Online presence	<input type="checkbox"/> Facebook <input type="checkbox"/> Open source mapping <input type="checkbox"/> Trail Forks <input type="checkbox"/> AllTrails <input type="checkbox"/> Strava <input type="checkbox"/> Town website
Maintained by	
Notes	Stowe Trails Partnership announced plan fall 2025 to build 10-15 miles new singletrack completed in 3 phases over the next 3 years.



Trail Name/ Area	Schools to LVRT via Morrisville Water and Light- proposed trail (JJ)
Location	Connecting School Trails to MWL Property and LVRT at Darling Rd/Route 15
Description- trail surface, difficulty, type of construction	It could be an amazing community resource to connect the school trails to LVRT through property owned by MWL. The idea has been broached with Ryan Heraty of LSSU and Scott Johnstone of MWL via meetings held by Hilary Warner in 2024. The owner of the private property in the middle is not interested in allowing a trail through their property. It could be possible to create a route through the Fairwood neighborhood.
Trail length	
Signage/ kiosk at trailhead	
Users defined	
Parking	
Map	
Wayfinding	
Trail condition	
Presence on E911	
Presence on heat maps	
Online presence	<input type="checkbox"/> Facebook <input type="checkbox"/> Open source mapping <input type="checkbox"/> Trail Forks <input type="checkbox"/> AllTrails <input type="checkbox"/> Strava <input type="checkbox"/> Town website
Maintained by	
Notes	



Trail Name/ Area	Velomont Trail
Location	
Description- trail surface, difficulty, type of construction	
Trail length	
Signage/ kiosk at trailhead	
Users defined	
Parking	
Map	
Wayfinding	
Trail condition	
Presence on E911	
Presence on heat maps	
Online presence	<input type="checkbox"/> Facebook <input type="checkbox"/> Open source mapping <input type="checkbox"/> Trail Forks <input type="checkbox"/> AllTrails <input type="checkbox"/> Strava <input type="checkbox"/> Town website
Maintained by	
Notes	<p>The Velomont is a shared project between Vermont Huts & Trails and Vermont Mountain Bike Association (VMBA) for a multi-use, hut-supported trail system, optimized for mountain biking, that will run the length of Vermont.</p> <p>It will consist of a network of 485 miles of new and existing trail, connecting 23 Vermont mountain biking chapters across public and private lands, linking 27 communities across the state, while employing and training 330 young adults as they build 30 new huts and five new downtown hostels.</p> <p>Meeting held 3/4/26 with Jerry Throne, Hilary Warner, Dave Durand, Angus MCCusker, Will Robens for initial discussion</p>

Conservation Subdivisions

These conserved lands have potential for trails and are therefore included in this inventory.

Trail Name/ Area	Beacon Hill conservation subdivision property (KK)
Location	
Description- trail surface, difficulty, type of construction	
Trail length	
Signage/ kiosk at trailhead	
Users defined	
Parking	
Map	
Wayfinding	
Trail condition	
Presence on E911	
Presence on heat maps	
Online presence	<input type="checkbox"/> Facebook <input type="checkbox"/> Open source mapping <input type="checkbox"/> Trail Forks <input type="checkbox"/> AllTrails <input type="checkbox"/> Strava <input type="checkbox"/> Town website
Maintained by	
Notes	

Trail Name/ Area	Campbell Road (MM)
Location	
Description- trail surface, difficulty, type of construction	
Trail length	
Signage/ kiosk at trailhead	
Users defined	
Parking	
Map	
Wayfinding	
Trail condition	
Presence on E911	
Presence on heat maps	
Online presence	<input type="checkbox"/> Facebook <input type="checkbox"/> Open source mapping <input type="checkbox"/> Trail Forks <input type="checkbox"/> AllTrails <input type="checkbox"/> Strava <input type="checkbox"/> Town website
Maintained by	
Notes	Ron Stancliff said: On Campbell Road the land bordering Koper has trails.

Trail Name/ Area	Elizabeth Lane (NN)
Location	- Percy conservation subdivision property
Description- trail surface, difficulty, type of construction	
Trail length	
Signage/ kiosk at trailhead	
Users defined	
Parking	
Map	
Wayfinding	
Trail condition	
Presence on E911	
Presence on heat maps	
Online presence	<input type="checkbox"/> Facebook <input type="checkbox"/> Open source mapping <input type="checkbox"/> Trail Forks <input type="checkbox"/> AllTrails <input type="checkbox"/> Strava <input type="checkbox"/> Town website
Maintained by	
Notes	

Trail Name/ Area	First Light Lane (PP)
Location	conservation subdivision property- Lamoille Land (tiny houses between Vanesse Rd and Joes Pond Road)
Description- trail surface, difficulty, type of construction	
Trail length	
Signage/ kiosk at trailhead	
Users defined	
Parking	
Map	
Wayfinding	
Trail condition	
Presence on E911	
Presence on heat maps	
Online presence	<input type="checkbox"/> Facebook <input type="checkbox"/> Open source mapping <input type="checkbox"/> Trail Forks <input type="checkbox"/> AllTrails <input type="checkbox"/> Strava <input type="checkbox"/> Town website
Maintained by	
Notes	

Trail Name/ Area	Frazier Road, Duplexes above Tractor Supply (QQ)
Location	, CCS
Description- trail surface, difficulty, type of construction	
Trail length	
Signage/ kiosk at trailhead	
Users defined	
Parking	
Map	
Wayfinding	
Trail condition	
Presence on E911	
Presence on heat maps	
Online presence	<input type="checkbox"/> Facebook <input type="checkbox"/> Open source mapping <input type="checkbox"/> Trail Forks <input type="checkbox"/> AllTrails <input type="checkbox"/> Strava <input type="checkbox"/> Town website
Maintained by	
Notes	

Trail Name/ Area	Washington Highway, across from Humble Heart Farm (RR)
Location	, on conservation subdivision property map, Greaves
Description- trail surface, difficulty, type of construction	
Trail length	
Signage/ kiosk at trailhead	
Users defined	
Parking	
Map	
Wayfinding	
Trail condition	
Presence on E911	
Presence on heat maps	
Online presence	<input type="checkbox"/> Facebook <input type="checkbox"/> Open source mapping <input type="checkbox"/> Trail Forks <input type="checkbox"/> AllTrails <input type="checkbox"/> Strava <input type="checkbox"/> Town website
Maintained by	
Notes	

Trail Name/ Area	Blank template
Location	
Description- trail surface, difficulty, type of construction	
Trail length	
Signage/ kiosk at trailhead	
Users defined	
Parking	
Map	
Wayfinding	
Trail condition	
Presence on E911	
Presence on heat maps	
Online presence	<input type="checkbox"/> Facebook <input type="checkbox"/> Open source mapping <input type="checkbox"/> Trail Forks <input type="checkbox"/> AllTrails <input type="checkbox"/> Strava <input type="checkbox"/> Town website
Maintained by	
Notes	



APPENDIX B

RTP Project Summary and Workplan

Supporting Document for:
Morristown Trail Inventory, Assessment, and Connectivity Planning Project

June 12, 2026



PROJECT DESCRIPTION

The Town of Morrilltown will complete a Trail Inventory, Assessment, and Connectivity Planning Project to document locally managed trails and identify opportunities to improve trail connections within town and to the Lamoille Valley Rail Trail, establishing priorities for future trail work.

PURPOSE OF THIS APPENDIX

This appendix is provided for informational purposes and summarizes the Vermont Recreational Trails Program (RTP) workplan associated with this project. Respondents should use this information to understand the anticipated scope, timeline, and deliverables associated with the grant-funded work.

PROJECT CLARIFICATIONS

- The project focuses on inventory, assessment, and connectivity planning for locally managed trails within Morrilltown.
- Statewide trail systems, including the Lamoille Valley Rail Trail (LVRT), Long Trail, Catamount Trail, and VAST trails, will be considered as part of the connectivity analysis but are not included in the trail assessment component of the project.
- The Town anticipates utilizing Morrilltown Conservation Commission (MCC) members, Trails Committee members (if established), and other community volunteers to assist with trail inventory and data collection activities.
- Public-facing trail maps are anticipated as a future effort and are not included within the RTP-funded scope of work.
- Coordination with Lamoille County Planning Commission (LCPC) may occur regarding existing GIS resources and future mapping efforts.

2026 RTP Workplan Template:

The Workplan must describe the activities that will be undertaken to accomplish the project, the expected time frame for accomplishment in order of work, the projected results (measurable final products, projected improvements, etc.). Put the steps in timeline order! If you are completing work at multiple locations, copy the chart separately for each site. *Refer to the Application Guidance documents for additional information.* **NOTE: Applicants should plan for grant-funded work to begin no earlier than July 13, 2026, and all work should be completed by December 31, 2027.**

Trail or Trail System Name	Morristown Townwide Trail Network				
City(ies)/Town(s)	Morristown, VT				
Activity (Briefly describe work component and, if applicable, the specific location on the trail)	Description (What tasks are included? In general terms, who will do the work? What tools, equipment, and/or materials will be used?)	Anticipated Results (Quantifiable list of what you will accomplish)	Anticipated Start Date (Month/Year)	Anticipated End Date (Month/Year)	Is this work part of the RTP grant request or is it complementary work outside the request? (Enter "RTP Request" or "Complementary")
Procurement and Consultant Selection (Request for Proposals)	<ul style="list-style-type: none"> Develop, advertise, and manage a Request for Proposals (RFP) for a professional trail planning and assessment consultant in accordance with federal and municipal procurement requirements. Review and evaluate proposals and select a qualified consultant to lead trail inventory, assessment, connectivity analysis, and volunteer training activities. Work will be led by Town of Morristown staff with support from the Morristown Conservation Commission using standard 	<ul style="list-style-type: none"> One qualified consultant selected and under contract in compliance with RTP requirements. 	June 2026	July 2026	Complementary

	administrative and procurement materials.				
Project Coordination & Scoping	<ul style="list-style-type: none"> • Convene Town of Morristown staff, Morristown Conservation Commission (MCC), and partner organizations like Lamoille County Planning Commission (LCPC), trail assessment consultants, and other stakeholders to confirm project goals, timeline, and roles. • Review existing GIS layers, trail maps, and prior trail reports. • Establish data framework and inventory approach. 	<ul style="list-style-type: none"> • Finalized project scope, timeline, and partner responsibility • Refine roles and timeline for community and stakeholder engagement 	July 2026	August 2026	RTP Request
Train Volunteers in Comprehensive Trail Inventory & Assessment	<ul style="list-style-type: none"> • Create volunteer trail inventory and initial trail condition data collection process • Train MCC and other volunteers to conduct trail inventories and trail condition data collection 	<ul style="list-style-type: none"> • Develop data collection process • 5-10 volunteers trained in trail assessment protocols. 	July 2026	September 2027	RTP Request
Volunteer Training and Participation in Comprehensive Trail Inventory & Assessment	<ul style="list-style-type: none"> • MCC volunteers and other volunteers to support trail inventory and trail condition data collection after training 	<ul style="list-style-type: none"> • Everyone will be trained on digital collection • Volunteers will assist in achieving the results as described below 	August 2026	May 2027	Complementary

<p>Comprehensive Trail Inventory & Assessment</p>	<ul style="list-style-type: none"> • Inventory publicly accessible trails on town, school, Town Forest, conserved, and subdivision lands • Inventory trail-related-structures and amenities: trailheads, signage, kiosks, bridges, parking <p>Identify trail character, designed or designed uses, and/or uses the trail could sustainably support currently or with minor improvements</p> <ul style="list-style-type: none"> • Conduct in-depth, professional trail assessment evaluation with related prescriptions and priorities 	<ul style="list-style-type: none"> • Complete inventory of at least 20 miles of existing natural surface trails. • Trail condition, use, difficulty, character and accessibility documented in centralized database/spreadsheet. • All trailhead amenities and trail related infrastructure are inventoried and recorded 	<p>August 2026</p>	<p>May 2027</p>	<p>RTP Request</p>
<p>Connectivity & Gap Analysis</p>	<ul style="list-style-type: none"> • Review trail network to identify missing connections, priority links, and opportunities to connect to community destinations (schools, parks, Town Forest, Oxbow Park) and the Lamoille Valley Rail Trail (LVRT). • Note landowner permissions, permitting requirements, and potential barriers. 	<ul style="list-style-type: none"> • Written connectivity analysis highlighting priority gaps, missing links, and recommended future projects. • List of landowner/permit considerations for future trail development. 	<p>August 2026</p>	<p>May 2027</p>	<p>RTP Request</p>
<p>Community & Stakeholder Engagement</p>	<ul style="list-style-type: none"> • Host 2 public meetings and outreach sessions with partners to gather input on trail priorities, safety, and connectivity needs. • Integrate MCC, Morrisville Water & 	<ul style="list-style-type: none"> • 2 public engagement sessions conducted. • Record of community input compiled and summarized to guide plan recommendations. • Public priorities 	<p>September 2026</p>	<p>July 2027</p>	<p>RTP Request</p>

	<p>Light, LCPC, schools, and trail organization input into the analysis.</p> <ul style="list-style-type: none"> • Consultant to develop public survey 	<p>documented for connectivity and safety considerations.</p>			
Community & Stakeholder Engagement	<ul style="list-style-type: none"> • MCC and Town to host public forums 	<ul style="list-style-type: none"> • Encourage and engage the community to participate in public forums and survey 	September 2026	July 2027	Complementary
Draft & Final Trail Inventory, Assessment, & Connectivity Plan	<ul style="list-style-type: none"> • Prepare draft plan summarizing inventory data, assessment results, and connectivity analysis. • Develop recommendations and prioritize trail improvements, future mapping, and stewardship strategies. • Present draft and final plan to MCC and Selectboard for review and adoption. 	<ul style="list-style-type: none"> • Draft and final Morristown Trail Inventory, Assessment, and Connectivity Plan completed. • Plan adopted as guiding document for prioritized future trail projects and stewardship. • 100% of required internal reviews completed. 	July 2027	December 2027	RTP Request
GIS Integration & Public-Facing Map Development	<ul style="list-style-type: none"> • Work with LCPC and/or other organizations to use project data to create layered GIS map files for future maps. • Prepare framework for public-facing maps for kiosks and online access (no RTP funds used; complementary work). 	<ul style="list-style-type: none"> • GIS layers created and ready for future map development. • Public map framework established for long-term trail connectivity and planning. 	September 2027	June 2028	Complementary