

REQUEST FOR PROPOSALS (RFP)  
Accessible Parking Development & Accessible Railings Improvements  
Marion County, Kansas

Introduction: Marion County is seeking proposals from qualified contractors to provide construction services for improvements to the accessible parking area and accessible hand railings at the Marion County Courthouse campus. The work consists of two major components:

Accessible Parking Development (Phases 1 and 2)  
Accessible Railings Removal, Replacement, and New Installation

Project Scopes of Work:

**1. Base Bid = Accessible Parking Development Plan Phase One:**

**Expand the existing accessible parking and add a designated loading zone for deliveries.**

- a. The loading zone will be located at the northernmost end of the accessible parking area.
  - b. Add 3-4 additional accessible parking spaces.
  - c. Preserve existing spaces and add the new accessible spaces and loading/unloading zone as shown on the attached drawing.
- Excavate approximately 1800 sq. ft. to prepare for installation of a 6-inch crushed rock base and 8-inch concrete paving for a pad measuring approximately 106' x 25' located between the courthouse and the parking lot south of the EMS building. Existing parking will remain in place.
  - Install approximately 35 cubic yards of crushed rock base, compacted to support the concrete pad.
  - Install approximately 45 cubic yards of wire-reinforced 8-inch concrete, matching the elevations of existing concrete.
  - Install concrete parking stops, removing and disposing of any damaged existing stops.
  - Paint all parking spaces and loading zone in accordance with applicable regulations.
  - Install 25 feet of concrete curbing/stem wall to transition from the accessible parking pad to the adjacent sidewalk and parking area on the south side.

**2. Alternate = Accessible Parking Development Plan Phase Two:**

- Extend concrete curbing approximately 90 feet from the east side of the accessible parking area to the street sidewalk following existing contour.
- Remove approximately 450 sq. ft. of existing sidewalk adjacent to the EMS parking lot and replace with approximately 675 sq. ft. of new 4-inch concrete sidewalk (approximately 6' x 112').

County-Performed Work (for reference only; not part of contractor bid)

- Remove existing light pole and relocate security light to SE corner of the courthouse.
- Install protective bollards sufficient to protect the air conditioning unit.
- Remove remaining grass and gravel the remainder of the area for future parking development

### 3. Accessible Railings:

- Remove and replace approximately 70 feet of existing accessible hand railing on the accessible ramp from the parking area to the courthouse south door. The revised design must eliminate any floor-mounted anchoring on the ramp surface and instead mount the handrails on the top or sides of the stem walls.
- Install approximately 60 feet of new (additional) accessible handrail in front of the accessible parking area adjacent to the EMS building as indicated on the attached drawings.
- All handrail placement and installation must comply with current ADA requirements.

Vendor Requirements: All vendors must include the following documents with their submission:

- Certificate of Insurance showing liability coverage and workers compensation coverage.
- Completed IRS Form W-9.
- Short statement of related qualifications and experience, along with client references.

**A site visit is required.** Vendors wishing to bid on this project must schedule an appointment to view the site by contacting: Kevin Moon, Facilities Director – 620-381-4390 or by email at [kmoon@marioncoks.net](mailto:kmoon@marioncoks.net).

Proposal Submission Instructions: Proposals may be mailed or delivered to:

Marion County Administrator's Office  
200 S. Third St., Suite 101  
Marion, KS 66861

Email submissions to: [kmoon@marioncoks.net](mailto:kmoon@marioncoks.net). If not submitting in person, PLEASE VERIFY that the County has received your submission.

Deadline: All proposals must be received no later than **July 16**. Late submissions will not be accepted.

Evaluation Criteria: Proposals will be evaluated based on:

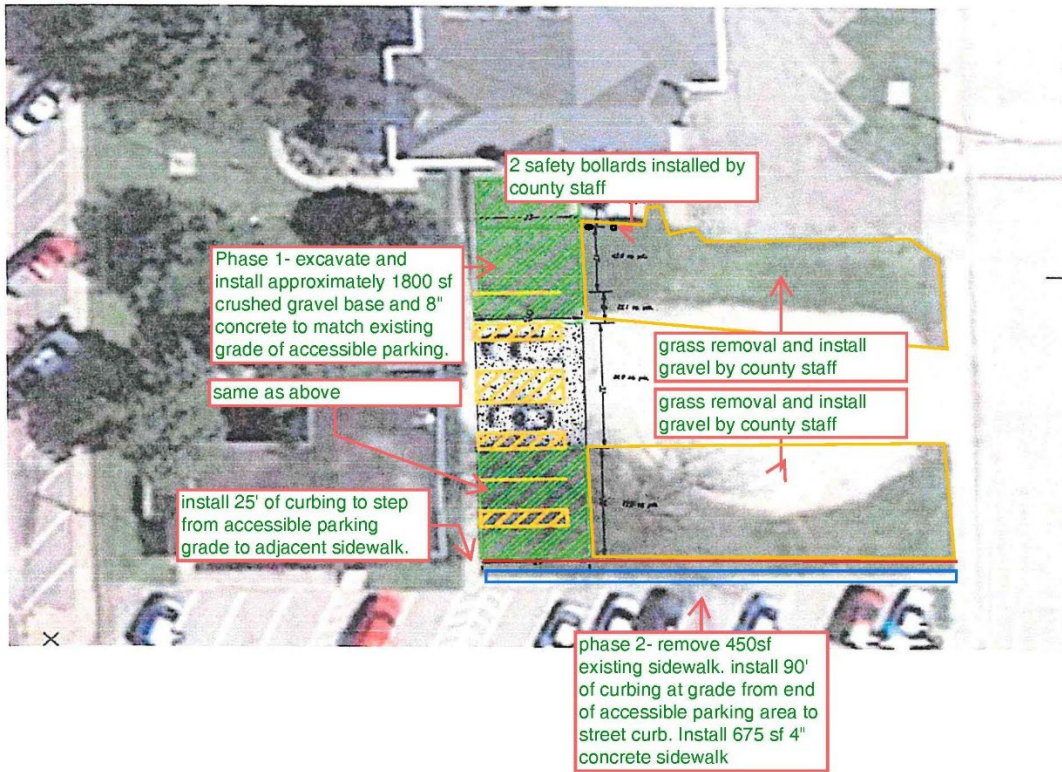
- Demonstrated experience with concrete, ADA accessibility upgrades, and / or railing installation.
- Ability to meet scheduling expectations.
- Cost competitiveness.
- Completeness of submission.
- References and qualifications.

General Terms & Conditions: Marion County reserves the right to accept or reject any or all proposals. The County may negotiate scope and price with selected vendors. The County is not responsible for costs associated with proposal preparation.

Work must comply with all applicable ADA standards, building codes, and local regulations.

Questions regarding this RFP should be directed to: Kevin Moon 620-381-4390; [kmoon@marioncoks.net](mailto:kmoon@marioncoks.net).

## Accessible Parking Development Plan



## Accessible Railings

